

CASE STUDY
PILING, ARMSTRONG CONSTRUCTION

Development: Timber frame residential apartments

Location: Hull City Centre

Client: Armstrong Construction

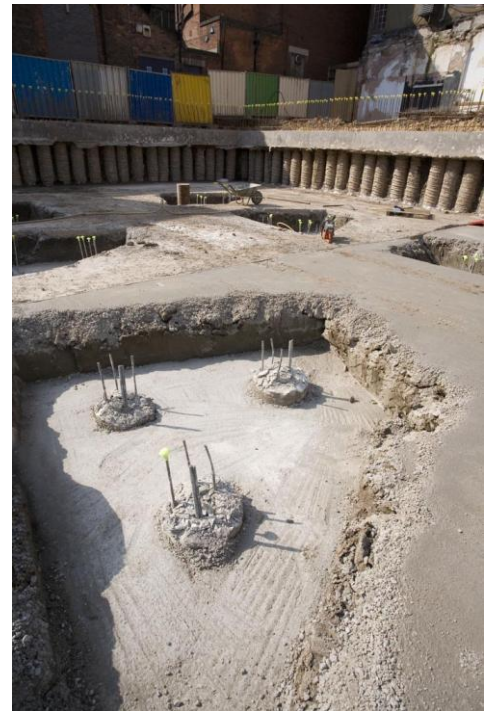
Project Overview

As the development had a city centre location, providing car parking was going to be imperative to selling the apartments. With this in mind Armstrong Construction had designed a basement car park as part of the project.

The apartment building itself was a three storey timber frame design, set to be the highest timber frame building in Yorkshire.

We designed and installed the contiguous piled wall and bearing piles. In addition we designed the capping beams and temporary propping system giving an overall service allowing the structure to progress out of the ground.

The location was a bit of a challenge with it being city centre, in fact just opposite the police station. But we made sure we designed with the correct rig in mind, which was capable of work within the tight access conditions.



Result

We carried out some further site investigations, using our in-house SI team. This allowed us to produce a cost effective solution suitable for the conditions and ensured the job wasn't faced with any unexpected problems. Combining this with utilising the best rigs for the job ensured the programme ran smoothly and was managed efficiently.



The programme was completed seven days ahead of schedule, saving our client both time and money and the Police any unnecessary congestion.

Technical information

We installed 204 No contiguous piles to 13.5m deep, 58 No bearing piles to 18m deep.
Rig: Llamada 130



Call us on 0845 630 8993
www.van-elle.co.uk